

# Symphonie Nr. 9

(Aus der Neuen Welt)

e-moll

Kontrabaß

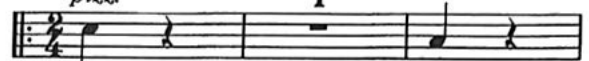
Antonin Dvořák op. 95  
herausgegeben von Christian Rudolf Riedel

Allegro molto  $\text{♩} = 136$

*pizz.*

1

*pp*



27



34



41



48



55



62 *f* *f*

69 *f* *ffz* *ffz*

76 *mp* *dim.* *p* **B**

83 *pp* *ppp* **C**

92 *pp* *arco* *molto cresc.* **D**

109 *f* *p* *f* *p*

116 *f* *dim.* **D**

124 *p* *fz* *fz* *p* *3* *3*

131 *dim.* *3* *3* *pp* *f* *fz*

137 *p* *3* *3* *3* *3* *p* *dim.* *3*

143 *pp* *3* **E** *7* **VI. I**

157 *pizz.*  
*pp*

164 *arco*  
*cresc.*

171 *ff*

177

412

II

Largo ♩ = 52

4 con sord.

ppp

ppp

molto cresc. f dim. > p

ppp

cresc.

dim. pp ppp f

fz

## IV

Allegro con fuoco  $\text{♩} = 152$ 

Musical score for Contrabass, IV, Allegro con fuoco. The score consists of nine staves of music in bass clef with a key signature of one sharp (F#) and a common time signature (C). The tempo is marked "Allegro con fuoco" with a quarter note equal to 152 beats per minute. The dynamics range from *ff* (fortissimo) to *fz* (forzando). The score includes various musical notations such as slurs, accents, and dynamic markings.

Staff 1: *ff*,  $\text{♩} = 152$ , accents (*∩*), slurs, and dynamic markings.

Staff 2: *ffz*, *f*, slurs, and dynamic markings.

Staff 3: *fz fz fz fz ff*, accents (*∩*), slurs, and dynamic markings.

Staff 4: *ff*, accents (*∩*), slurs, and dynamic markings.

Staff 5: accents (*∩*), slurs, and dynamic markings.

Staff 6: *ff fz*, accents (*∩*), slurs, and dynamic markings.

Staff 7: *fz*, accents (*∩*), slurs, and dynamic markings.

Staff 8: *ff fz fz*, slurs, and dynamic markings.

Staff 9: *B*, accents (*∩*), slurs, and dynamic markings.

45



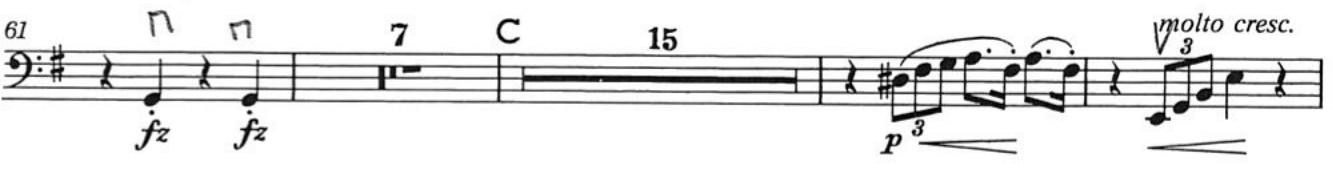
50



55



61



86



91



96



101



106



114

*mp* *dim.* *p* *ppp* *dim.*

120

1 E 4 *pizz.* *arco* *pp*

130

*fz* *p* *pp*

139

*f* *dim. p* *dim.* F

in tempo 2 *ff* *Meno mosso e maestoso* 1 *rit.* *ff*

330 *in tempo* *un poco meno mosso* *fff*

337 *in tempo (Allegro con fuoco)*

343